

Centrifuge 3024

High Speed Micro Centrifuge



Features

- Double cooling air design ensures fast cooling of the rotor and low energy consumption
- 3-layer sealed rotors ensure safe centrifugation
- Brushless motor drive, maintenance free
- Safety features include door interlock; excessive speed and temperature detection; automatic self-diagnostics
- Outstanding aluminum alloy rotors fully autoclavable at 121°C temperature and high pressure disinfection
- Five rotors are optional complete with 24 places 1.5/2.0mL tubes, 5.0mL, 0.2mL and 0.5mL tubes with adapters

Applications

Suitable for numerous biological, chemistry, clinical and research applications including molecular biology, clinical chemistry labs, wide variety of microbiology applications, such as DNA, RNA or protein isolation and many more.

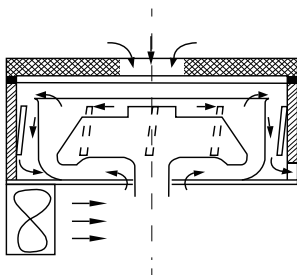


Brushless DC motor



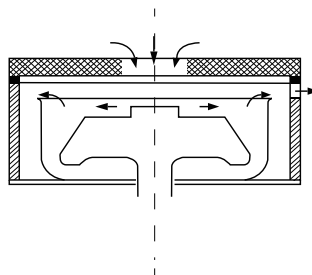
Wide range of rotors

Effective Ventilation System



Double cooling air design, enforcing air cooling from both the upper and lower side for the rotor.

Conventional design



Limited ventilation on the upper side of the rotor

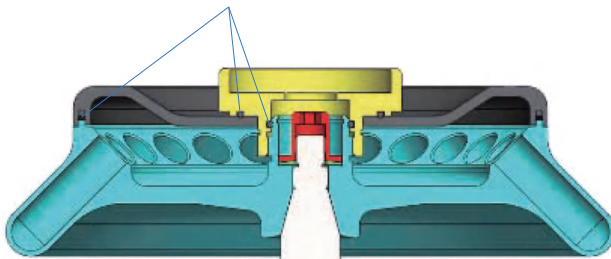


Lab1st rotors are manufactured from military-industrialgrade aluminum alloy with high mechanical strength for precise running and safety (excludes Centrifuge 2012 plus rotor)

- Every rotor can reach a maximum speed of 15000rpm
- Rotors are seated on a tapered shaft, concentric and self-aligning, perfect to achieve running stability at high speeds
- Centrifuge 3024 & Centrifuge 1524R with three-layer sealed rotors / anti- sample overflow prevents accidental leakage
- Centrifuge 3024 & Centrifuge 1524R rotors have passed MCA test according to IEC/EN61010-2-20, including mechanical safety and bio-safety tests
- Powerful cooling system minimizes rotor heating. Centrifuge 3024 rotors maintain at 10°C and Centrifuge 2012 rotors less than 8°C after running an hour

Seals within the aluminum alloy rotor

Three rubber seals fitted to achieve bio-safe condition



Rotor Features

Fully autoclavable

High strength aluminum alloy rotors are fully autoclavable, withstanding steam sterilizing at 121°C for 20 minutes

Three-layer seal

Centrifuge 3024 & Centrifuge1524R rotors are designed to prevent sample leakage. Each and every rotor is hermetically sealed by three rubber seals.

Mechanical safety

Lab1st centrifuges confirm to MCA standard IEC/EN61010-2-20, causing disruption by partially cutting and overloading rotor assembly, and guarantees that no part shall be detached to cause danger to person or the environment.

Specifications	Centrifuge 3024
Max. Speed	15000rpm(200-15000rpm), increment:10rpm
Max. RCF	21380×g, increment:10×g
Speed Accuracy	±20 rpm
Rotor Capacity	1.5/2mL×24,0.2/0.5mL×36, PCR-8 strips×4,5mL×12,5mL×18
Run Time	30sec-99min/Continuous
Acceleration/Braking time [Sec]	25s ↑ 25s ↓
Motor	Brushless DC motor
Safety Devices	Dual door interlock, Over-speed detection, Automatic internal diagnosis
Power Requirements	Single-phase, AC200V-400V, 50Hz/60Hz, 5A, AC100V-120V, 50Hz/60Hz, 8A 200W
Noise Level	≦ 64dB
Dimension[W×D×H]	280×364×266mm
Weight	12kg
Certification	CE cTÜVus FCC MCA
Other functions	Speed/RCF switch; Short-time run function; sound-alert function


Available rotors

AS24-2	Cat. No.919003
<p>for Centrifuge 3024 & Centrifuge1524R Max. speed: 15000rpm Max. RCF: 21380×g Rotor capacity: 2mL/1.5mL×24/0.2mL×24/0.5mL×24 Rotor material: Aluminum alloy Biosealing: Yes Available rotor adapters: A02P2,A05P2</p>	
	


AS18-5 (round bottom)	Cat. No.919001
<p>for Centrifuge 3024 & Centrifuge1524R Max. speed :15000rpm Max. RCF:21380×g Rotor capacity:5mL×18 (Round bottom) Rotor material:Aluminum alloy Biosealing:Yes</p>	
	

AS12-5V (cone bottom)	Cat. No.919002
<p>for Centrifuge 3024 & Centrifuge1524R Max. speed: 15000rpm Max. RCF: 21380×g Rotor capacity: 5mL×12(Cone bottom) Rotor material: Aluminum alloy Biosealing: Yes</p>	
	


Available adapters

A02P2	Cat. No.919006
<p>0.2mL rotor adapter Used with A12-2, A12-2P, AS24-2 and A24-2P rotors 24pcs/pk</p>	
	

AS36-05	Cat. No.919004
<p>for Centrifuge 3024 & Centrifuge1524R Max. speed: 15000rpm Max. RCF: 21380×g Rotor capacity: 0.5mL×36,0.2mL×36 Rotor material: Aluminum alloy Biosealing: Yes Available rotor adapters: A02P05</p>	
	

A05P2	Cat. No.919007
<p>0.5mL rotor adapter Used with A12-2, A12-2P, AS24-2 and A24-2P rotors 24pcs/pk</p>	
	

AS4-PCR8	Cat. No.919005
<p>for Centrifuge 3024 & Centrifuge1524R Max. speed: 15000rpm Max. RCF: 21380×g Rotor capacity:0.2mL/PCR8×4 Rotor material: Aluminum alloy Biosealing: Yes</p>	
	

A02P05	Cat. No.919008
<p>0.2mL rotor adapter Used with AS36-05 rotor 3 6pcs/pk</p>	
	

Centrifuge is used to separate liquid and solid particles or components in a liquid mixture. Centrifuge series includes palm micro centrifuges, high-speed centrifuges (refrigerated and non-refrigerated), hematocrit centrifuges and low speed centrifuges.

List of models:

Series	Image	Model	Display	Max. speed(RCF)	Rotor Capacity
Palm Micro Centrifuge		Centrifuge 1008	-	7000rpm (2680×g)	8×0.2/0.5/1.5/2mL 0.2mL×32PCR tubes 0.2mL×4PCR8-strips
High speed Mini Centrifuge		Centrifuge 2012	LCD	15000rpm (15100×g)	12×0.2/0.5/1.5/2mL
High speed Refrigerated Micro Centrifuge		Centrifuge 1524R	LCD	15000rpm (21380×g)	24×0.2/0.5/1.5/2mL 36×0.5mL 4×PCR-8 strips 12×5mL (cone bottom) 18×5mL (round bottom)
High speed Micro Centrifuge		Centrifuge 3024	LCD	15000rpm (21380×g)	
Hematocrit Centrifuge		Centrifuge 1424	LCD	12000 rpm (13680×g)	24×capillary tubes
		Centrifuge 1224	LCD	12000 rpm (13680×g)	24×capillary tubes
Low-speed Centrifuge		Centrifuge 0412	LCD	4500rpm (2490×g)	8×15mL 12×1.5-5/7/10mL
Multi-Purpose low Speed Centrifuge		Centrifuge 0424	LCD	4000rpm (2500×g)	Angel: 8×15mL Angel: 12×1.5-5/7/10mL Angel: 24×15mL Swing: 6×15mL Swing: 4×50mL
		Centrifuge 0408	LED	4000rpm (1900×g)	Angel: 8×15mL Angel: 12×1.5-5/7/10mL
Low-speed Centrifuge		Centrifuge 0506	LCD	5000rpm (2600×g)	6×1.5-5/7/10/15mL
Multi-Purpose Low-speed Centrifuge		Centrifuge 0636	LCD	6000rpm (4100×g)	60×2mL 18×5mL 30×15mL 8×50mL 12×PCR-8 strips 4×Deep Well Plates 8×PCR Microplate or ELISA Microplate